

***Architecture, profession, and intertwined positions:
Competition and design in areas having traces of cultural heritage***

Author: Magnus Rönnn



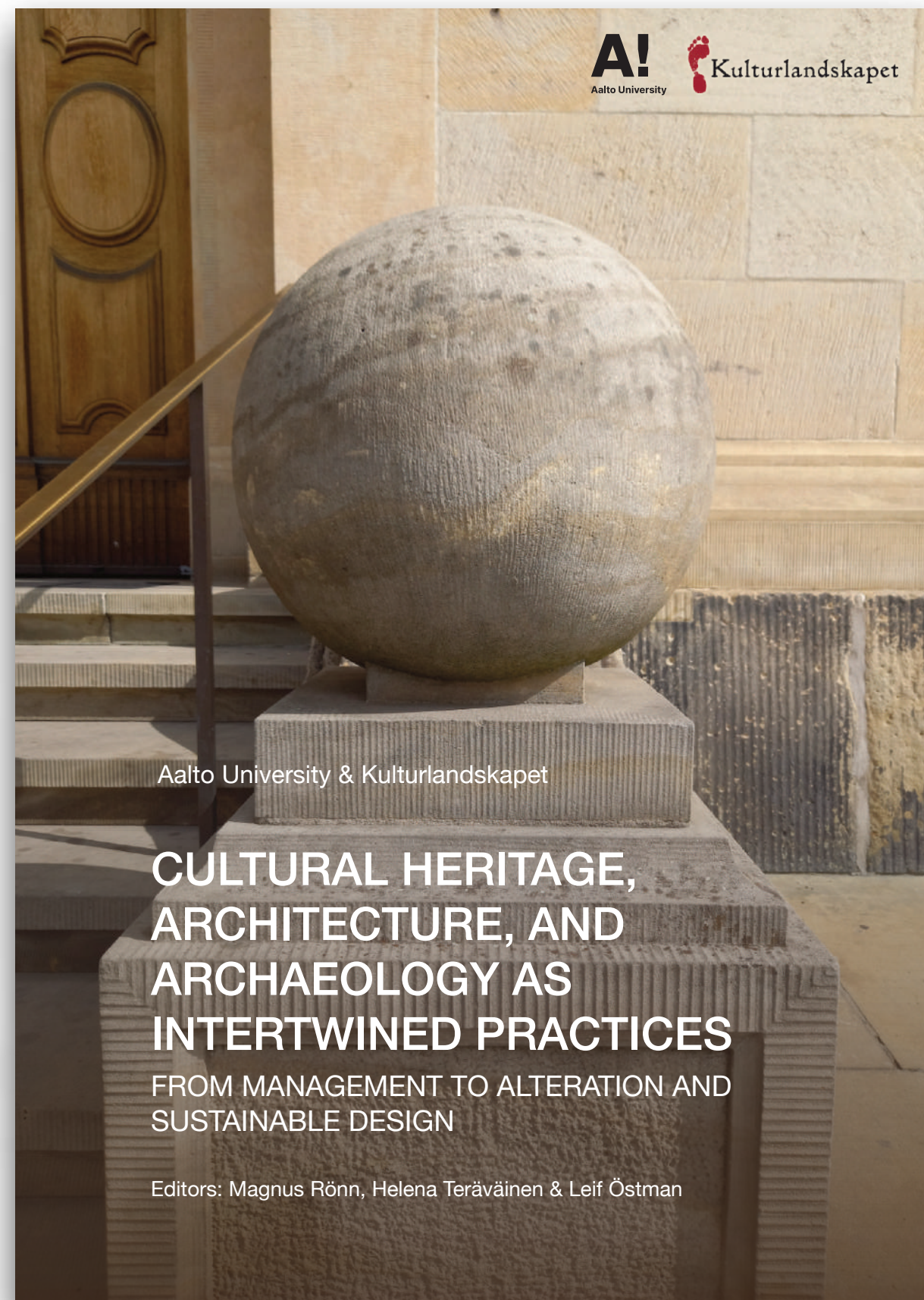
Seminar: 15 of of June, 15.00-17.00 in room 4405 Ålgräset, Natrium,
Dep. Conservation, Gothenburg University

Content

- Background
- Objective
- Research Questions
- Methods & Documents
- The Design Developer Competition
- The open competition
- Planning - and Architectural project
- Findings and conclusions

Cultural heritage, architecture, and archaeology as intertwined practices: From management to alteration and sustainable

EAA Session - key concepts Intertwining



The competition in Norrköping



Let's create
Norrköping

Tävlingsförslag inlämnas senast 17 november 2022

Framtidens innovativa boende #2
Program för marktilldelningstävling för kvarteret Ankan inom Inre hamnen, Norrköping kommun




NORRKÖPING



Let's create
Norrköping

Framtidens innovativa boende #2
Juryutlåtande för marktilldelningstävling för kvarteret Ankan inom Inre hamnen, Norrköping kommun, mars 2023



NORRKÖPING

Background

Research project - Vinnova

- **Two competitions:** Invited competitions and Open Competition
- **Competition format:** Design Developer competition
- **Organiserar:** Norrköping Municipality
- Partners:
- **Norrköping Municipality**
- **Swedish Architects**
- **Chalmers and Halmstad University**

Objective & Research questions

The objective is to understand and critically reflect on cooperation, intertwined positions, and conflicting interests in the design-developer competition arranged in Norrköping.

The following research questions will be investigated and discussed:

- What kind of intertwined actions and measures can be identified among professionals with responsibility for cultural values and architectural qualities?
- How have the two top-ranked design proposals responded to the challenges in the competition?
- Are there any typical patterns of separation, integration, and intertwining in the competition to support cultural heritage values and architectural qualities in the new urban district?

Methods & Documents

Case study, action research, observations, interviewees, close reading

- Competition documents
- Local Guidelines steering land allocations
- Design program and investigation for the harbor transformation
- National interests for cultural preservation in the area (National Heritage Board)
- Observation inside the jury room
- Sven in-depth interviews (winning design team)
- Literature and reports - close reading

The Design Developer Competition

In-between the architectural competition and the Built Design Context

- The competition format started in 1960s, expanded in 1980s and regulated by law 2014
- The competition format is steered local - **no national competition rules**
- The competition format is outside **the public procurement act**
- The municipality has a strong position:
- **Land owner** - price and condition for transferring the site to winner
- **Organizer** - The program sin its tasks delivery demands, judging criteria, jury etc
- **Decision maker** - detailed development plan, building permit etc
- **Land allocation agreement** - steering the implementation of winning desgin

Guidelines - Land allocations

Handlingsplan

Handlingsplan för marktilldelning vid bostadsbyggande

SPN 2016/0039 241



NORRKÖPINGSS KOMMUN Stadsbyggnadskontoret	2018-05-23	Drökan
Dnr: SPN 2016/0039		241
Handled: SPN		

Beslutad - av stadsplaneringsnämnden 15 maj 2018.

Detta dokument är en revidering av äldre dokument med samma namn, SPN 2011/0146-7, beslutad 2011-12-06, och ersätter därmed tidigare dokument.

Detta dokument är ett också komplement till kommunens övergripande riktlinje för markanvisning, *Riktlinje för kommunala markanvisningar i Norrköpings kommun*, SPN 2015/0123-4, beslutad 2015-08-31 i kommunfullmäktige.

Denna handlingsplan syftar till att redovisa stadsplaneringsnämndens arbetsordning och förhållningssätt avseende tilldelning av kommunal mark avsedd för bostadsändamål. Denna handlingsplan vänder sig till stadsplaneringsnämnden, stadsbyggnadskontoret, kommunen i stort och byggherrar som verkar/vill verka i Norrköpings kommun.

STADSPLANERINGSNÄMNDEN

→ www.norrkoping.se



NORRKÖPING

Riktlinje

2015-08-31

Riktlinjer för kommunala markanvisningar i Norrköpings kommun

SPN-2015/0124

Riktlinjerna antogs i stadsplaneringsnämnden 4 april 2015 och i kommunfullmäktige 31 augusti 2015.

Stadsbyggnadskontoret har tagit fram riktlinjer för tecknande av kommunala markanvisningar i enlighet med ny lagstiftning (SFS 2014:899) vilket anger att varje kommun som använder markanvisning vid tilldelning av mark ska anta riktlinjer för tillämpningen av detta.

STADSBYGGNADSKONTORET

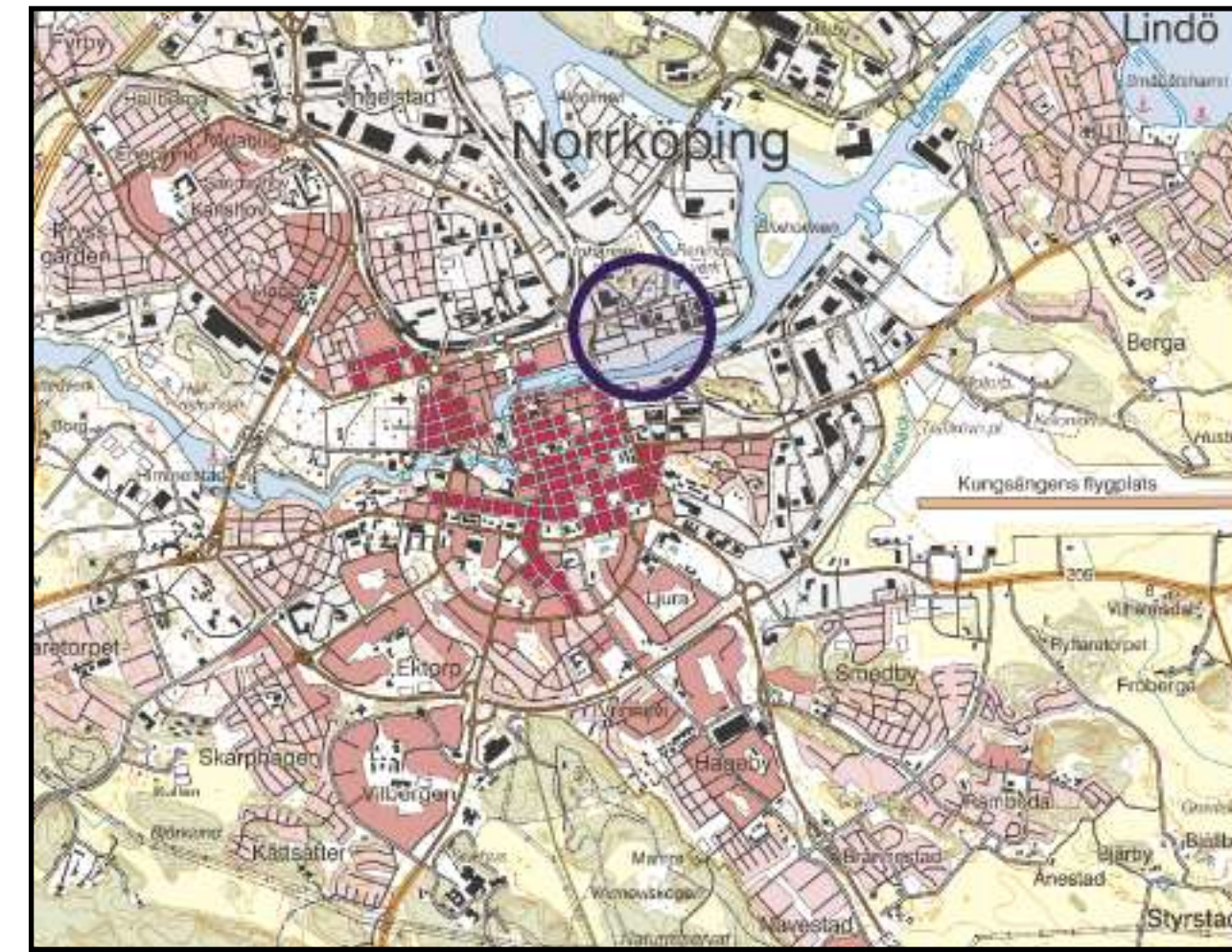
→ www.norrkoping.se



NORRKÖPING

The open competition

The site



The future oriented objective

- high architectural quality and fit into the new context;
- produce more renewable energy than is used during the year;
- reduce CO2 emissions by at least 40%;
- circularity in architecture and construction;
- social sustainability through flexible apartments that meet a diversity of needs,
- affordable rent/costs
- good housing, functions, and experiences of beauty;
- creativity and innovation in design, construction;

Judging and Assessment Criteria

- Architectural quality
- Energy use
- Climate footprint
- Circular processes
- Social sustainability
- Affordable rent/cost
- Innovation
- Developability

Jury

Insiden the jury room



Winning desgin proposal





Fasad mot norr 1:400

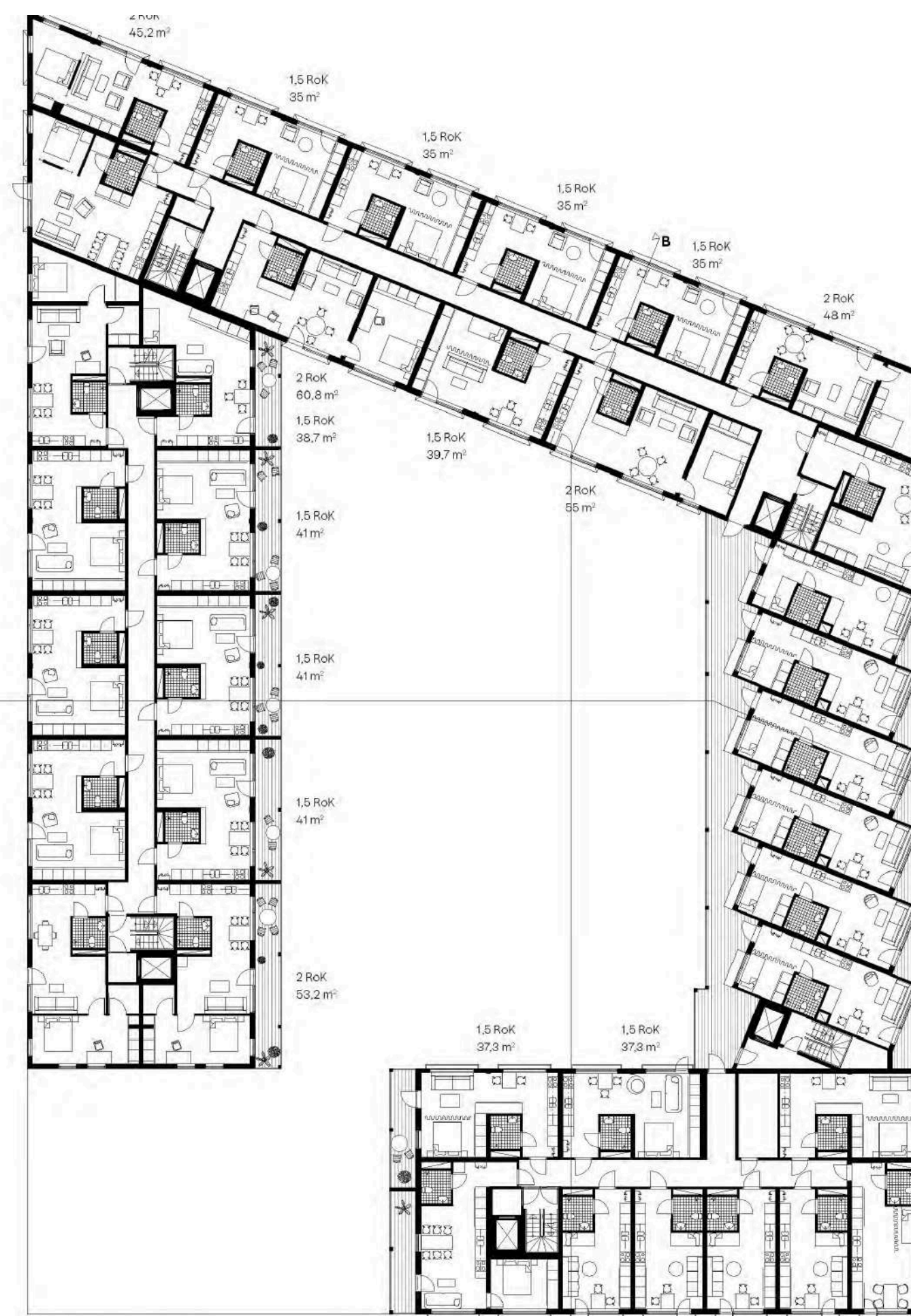
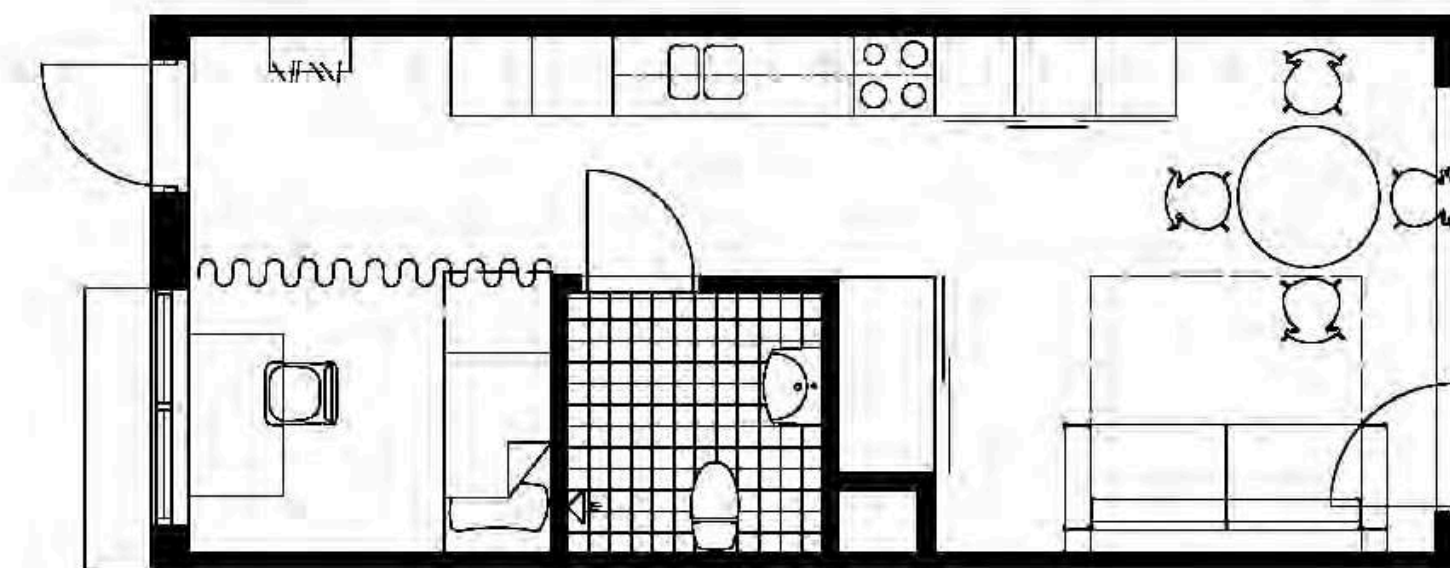
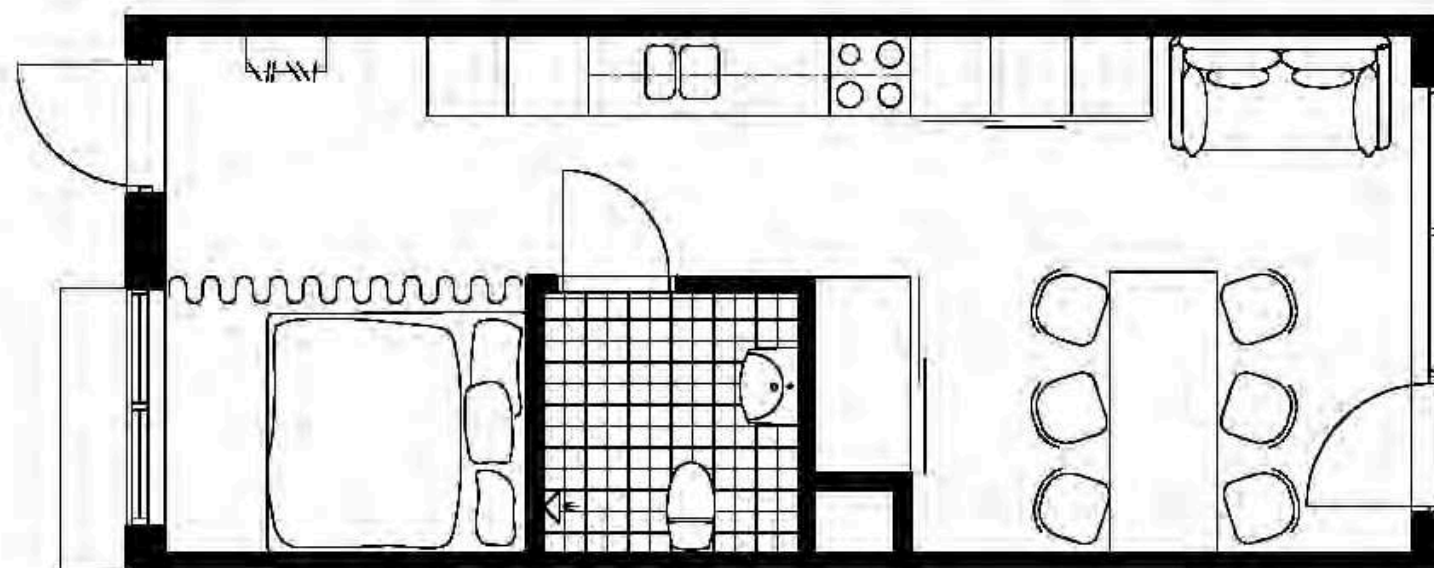
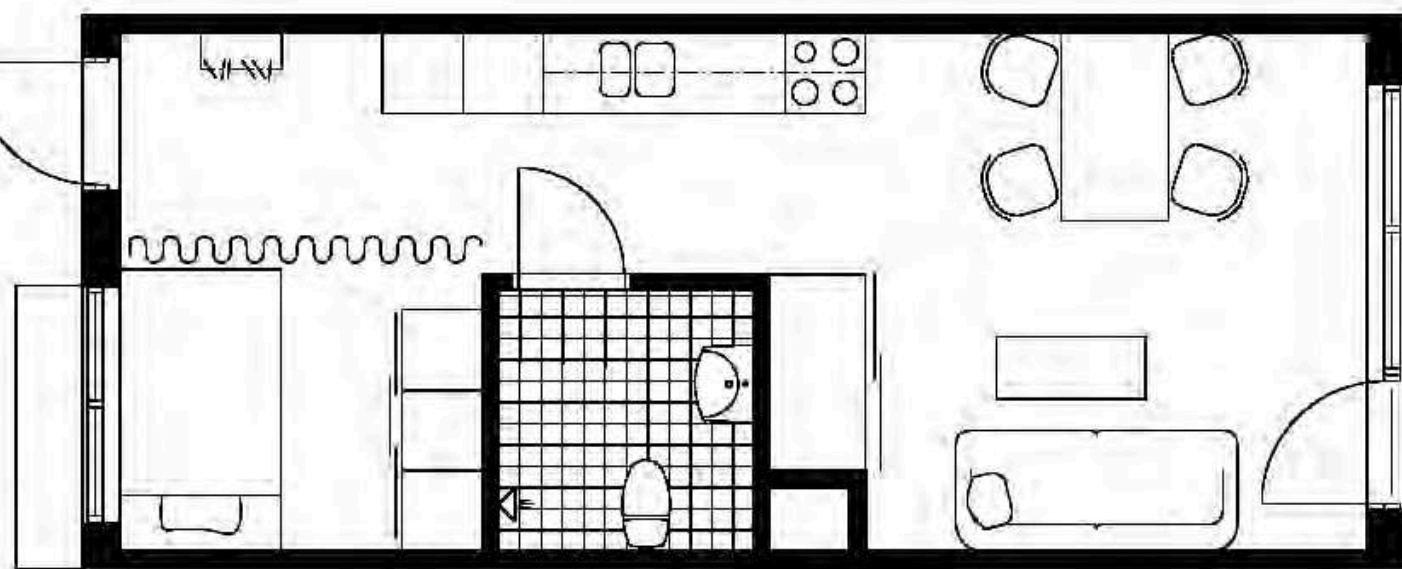


Fasad mot öst 1:400



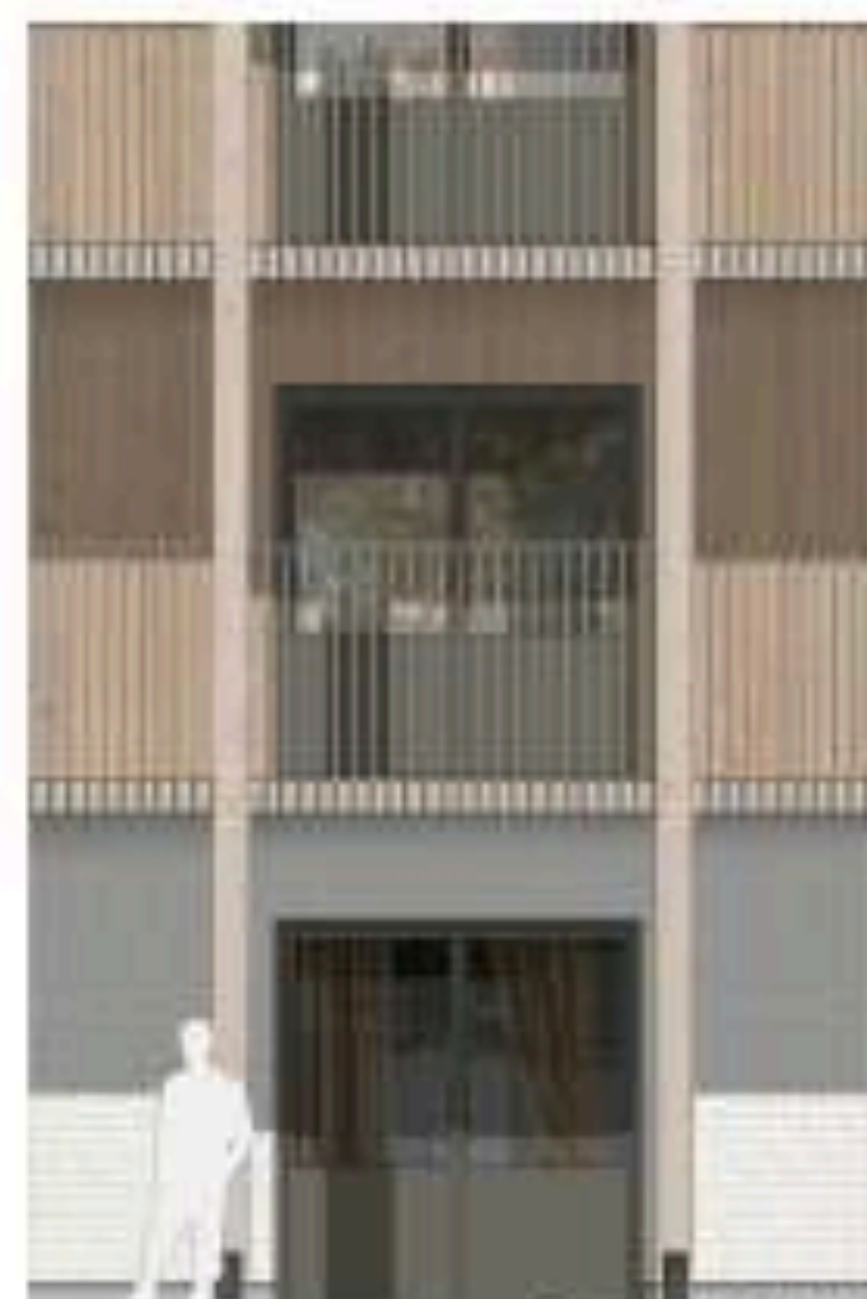
Fasad mot syd 1:400





Second Place





Detaljansikt fasad 150



Fasad mot öster inbyggd 1400



Fasad mot norr inbyggd 1400



Fasad mot väster inbyggd 1400



Fasad mot söder inbyggd 1400



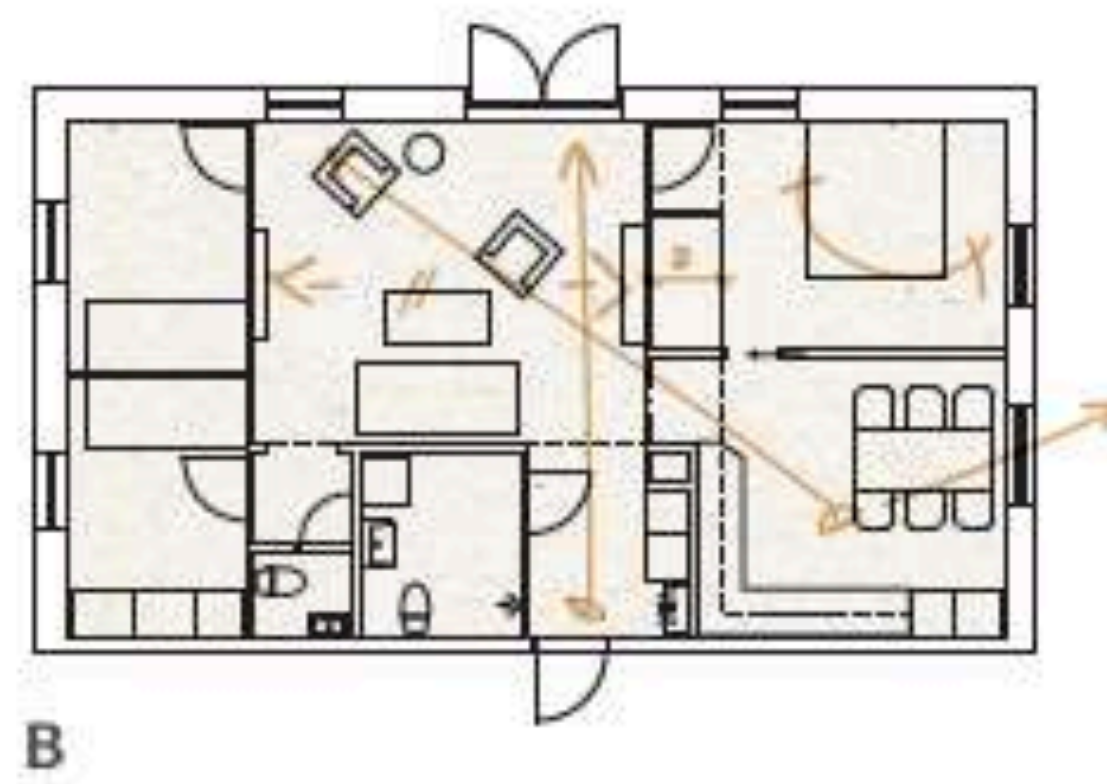
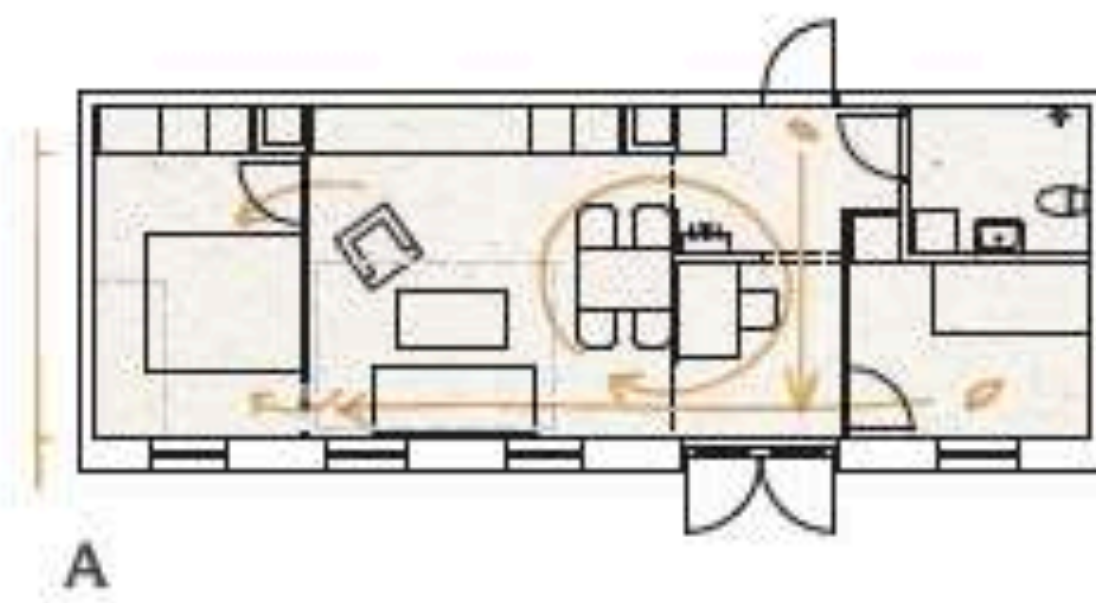
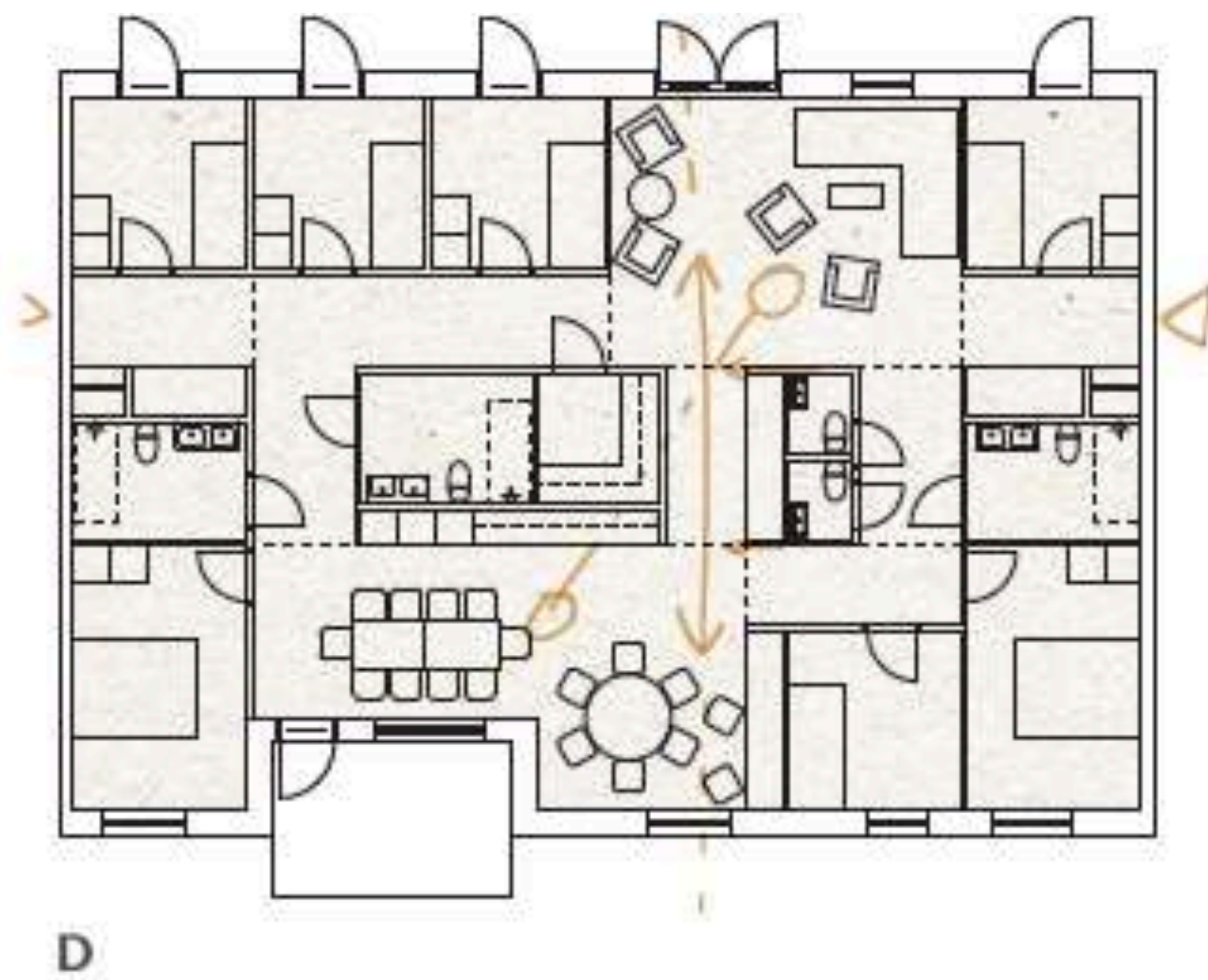
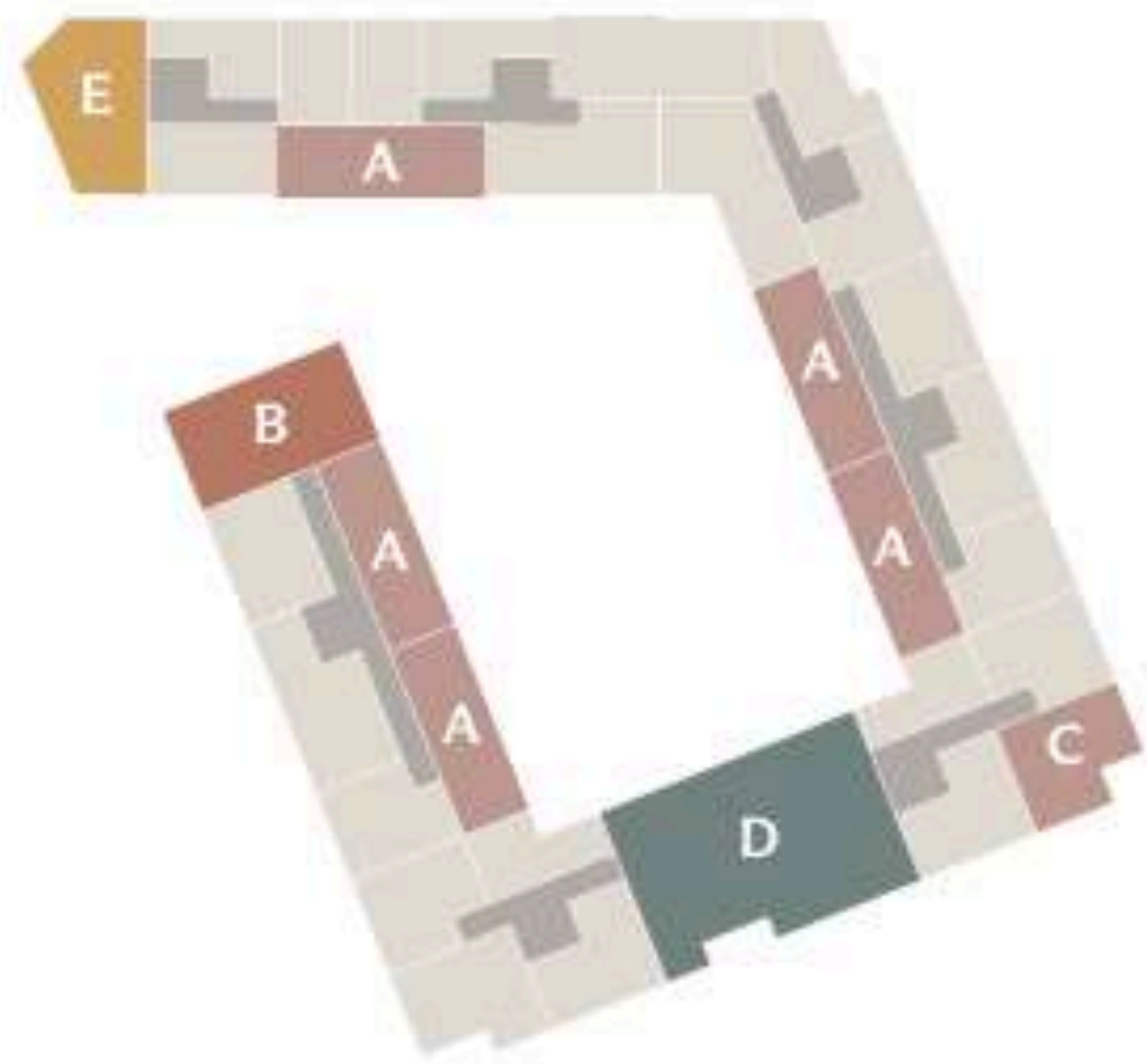
Fasad mot öster 1400



Fasad mot norr 1400

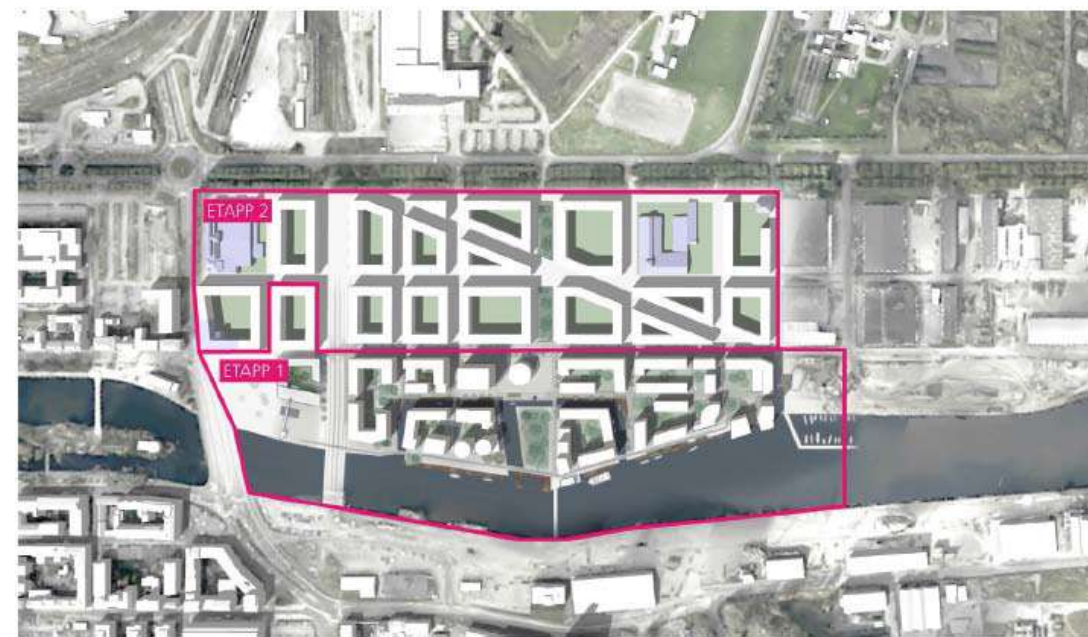


Fasad mot norr, fönst 1400



The planning and architectural project

The industrial heritage in the harbour



RAPPORT

BEBYGGELSEINVENTERING INRE HAMNEN ETAPP 2

REVIDERING AV BYGGNAD SINVENTERING ÖSTRA SALTÄNGEN 2012-02-01
PAUL WILUND 2019-02-11
REV: 2019-06-26

WILUND ARKITEKTER & ANTIKVARIER AB
NYBROGATAN 81 114 41 STOCKHOLM
08-23 19 39
WWW.WA2.SE
KONTORET@WA2.SE





Colour and material strategy



Next:Norrköping
Kulör- och materialstrategi för Inre hamnen

Bilaga till kvalitetsprogram Inre hamnen - etapp 1





1. Findings

Internal conditions and housing needs at the site

- Multidisciplinary Design team: Kaminsky, Mareld, Preservia, Kian Properties, and Moelven.
- The developer focus on small apartments
- Construction - adjustments of industrial models (factory)
- The surrounding housing is for middle-class families
- The jury involved the context in ranking design

2 . Findings

Design for ecological sustainability

- Climate declarations showing 144-145 kg CO₂e/m² GFA (gross floor area) in Modules A1–A5, compared to 318 kg CO₂e/m² GFA for standard dwelling buildings
- Circularity in design and construction as recycling of material and strategy for cooperation with companies
- The municipality provide site for storage of material
- Plus-energy solution when household electricity is excluded.

3. Findings

Designing and reviewing the future

- The competition proceeded architecture knowledge about the future by design
- The design proposals are models show the world of tomorrow - not as it is but how the build environment could look like
- The competition is a professional laboratory producing possibilities
- Ranking proposals is more art and science
- Professional competent is more important than research knowledge when ranking design proposals

4. Findings

The planning and architectural project

- Steering documents:
- *Detailed Development Plan* (Norrköping, 2022) for governing the new inner-city block. (7 of 14 civil servants are architects)
- *Colour and material strategy* produced by a building antiquarian and colour expert
- The County Administrative Board did not try to save the warehouses in the harbour - they did not fit in overall plan according to the municipality
- The *Action Plan for Land Allocation for Housing Construction* (Norrköping, 2018) is lacking compensation to companies for their development design proposals

Conclusion - intertwining

- Firstly, intertwined positions among professional actors, regulations, and policies and documents - only the the Urban planning office have an overview of the planning and architecture project for the transformation of are labour to a new inner-city district
- Secondly, intertwined positions in the competition proposals between design and technology
- Thirdly, the planning and the architectural project shows a typical pattern of intertwining and separations of the cultural environment and the industrial heritage in the port area.